

# State of Wyoming Corner Record

(In compliance with the **CORNER PERPETUATION AND FILING ACT**, Wyoming Statutes, 1997 Section 33-29-140 et. seq, and the Rules and Regulations of the Board of Professional Engineers and Professional Land Surveyors)

Reverse side of this form may be used if more space is needed.

Record of original survey and citation of source of historical information (if corner is lost or obliterated). Description of corner monumentation evidence found and/or monument and accessories established to perpetuate the location of this corner. Sketch of relative location of monument, accessories, and reference points with course and distance to adjacent corner(s) (if determined in this survey). Method and rationale for reestablishment of lost or obliterated corner.

**G.L.O. RECORD:**

**VARIATION 15°45'E**  
**FROM THE CORNER TO SECTIONS 20, 21, 28 AND 29 RAN EAST ON A RANDOM LINE BETWEEN SECTIONS 21 AND 28, 40 CHAINS AND SET A STONE FOR TEMP. 1/4 SECTION CORNER. AT 79.30 CHAINS INTERSECTED THE NORTH-SOUTH LINE AT THE CORNER TO SECTIONS 21, 22, 27 AND 28 FROM WHICH RAN ON A TRUE LINE BETWEEN SECTIONS 21 AND 28 39.65 CHAINS AND SET A LIMESTONE 15"X12"X3" 10" DEEP WITH "1/4" CARVED ON NORTH SIDE FOR 1/4 SECTION CORNER.**

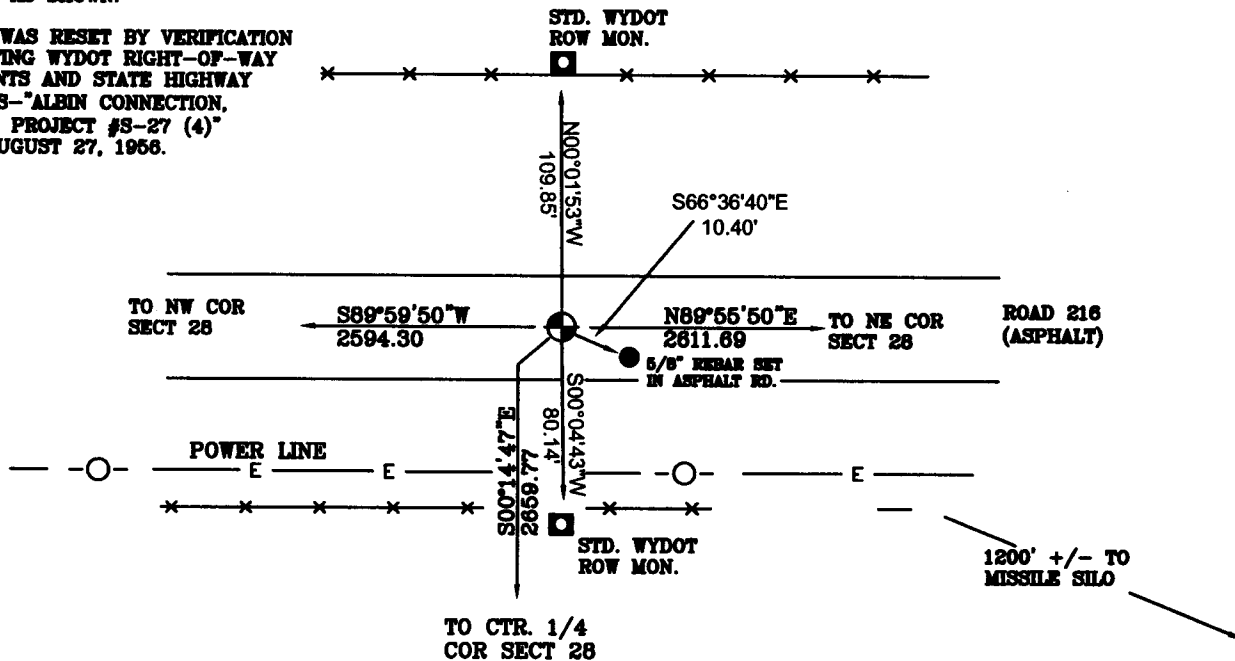


**NOTE:**  
**ALL FENCES ARE BARBED WIRE**

**AT THE CORNER:**

**FOUND A 1/2" SQUARE HEAD BOLT 4" BELOW SURFACE OF ASPHALT ROAD REPLACED WITH A 2 1/2" ALUMINUM CAP ON A 5/8" X 24" REBAR FLUSH WITH THE SURFACE OF ASPHALT ROAD STAMPED AS SHOWN.**

**CORNER WAS RESET BY VERIFICATION OF EXISTING WYDOT RIGHT-OF-WAY MONUMENTS AND STATE HIGHWAY DRAWINGS--"ALBIN CONNECTION, WYOMING PROJECT #S-27 (4)" DATED AUGUST 27, 1956.**



Date of Field Work: 11/18/08

Office Reference: RABQU

**Cross Index Plat**

1	2	3	4	5	6	7	8	9	10	11	12	13	14	15	16	17	18	19	20	21	22	23	24	25	
A	+	+	+	+	+	+	+	+	+	+	+	+	+	+	+	+	+	+	+	+	+	+	+	+	+
B	+	6	+	5	+	4	+	3	+	2	+	1	+	+	+	+	+	+	+	+	+	+	+	+	
C	+	+	+	+	+	+	+	+	+	+	+	+	+	+	+	+	+	+	+	+	+	+	+	+	
D	+	+	+	+	+	+	+	+	+	+	+	+	+	+	+	+	+	+	+	+	+	+	+	+	
E	+	+	+	+	+	+	+	+	+	+	+	+	+	+	+	+	+	+	+	+	+	+	+	+	
F	+	+	+	+	+	+	+	+	+	+	+	+	+	+	+	+	+	+	+	+	+	+	+	+	
G	+	7	+	8	+	9	+	10	+	11	+	12	+	+	+	+	+	+	+	+	+	+	+	+	
H	+	+	+	+	+	+	+	+	+	+	+	+	+	+	+	+	+	+	+	+	+	+	+	+	
I	+	+	+	+	+	+	+	+	+	+	+	+	+	+	+	+	+	+	+	+	+	+	+	+	
J	+	+	+	+	+	+	+	+	+	+	+	+	+	+	+	+	+	+	+	+	+	+	+	+	
K	+	+	+	+	+	+	+	+	+	+	+	+	+	+	+	+	+	+	+	+	+	+	+	+	
L	+	18	+	17	+	16	+	15	+	14	+	13	+	+	+	+	+	+	+	+	+	+	+	+	
M	+	+	+	+	+	+	+	+	+	+	+	+	+	+	+	+	+	+	+	+	+	+	+	+	
N	+	+	+	+	+	+	+	+	+	+	+	+	+	+	+	+	+	+	+	+	+	+	+	+	
O	+	+	+	+	+	+	+	+	+	+	+	+	+	+	+	+	+	+	+	+	+	+	+	+	
P	+	19	+	20	+	21	+	22	+	23	+	24	+	+	+	+	+	+	+	+	+	+	+	+	
Q	+	+	+	+	+	+	+	+	+	+	+	+	+	+	+	+	+	+	+	+	+	+	+	+	
R	+	+	+	+	+	+	+	+	+	+	+	+	+	+	+	+	+	+	+	+	+	+	+	+	
S	+	+	+	+	+	+	+	+	+	+	+	+	+	+	+	+	+	+	+	+	+	+	+	+	
T	+	30	+	29	+	28	+	27	+	26	+	25	+	+	+	+	+	+	+	+	+	+	+	+	
U	+	+	+	+	+	+	+	+	+	+	+	+	+	+	+	+	+	+	+	+	+	+	+	+	
V	+	+	+	+	+	+	+	+	+	+	+	+	+	+	+	+	+	+	+	+	+	+	+	+	
W	+	+	+	+	+	+	+	+	+	+	+	+	+	+	+	+	+	+	+	+	+	+	+	+	
X	+	+	+	+	+	+	+	+	+	+	+	+	+	+	+	+	+	+	+	+	+	+	+	+	
Y	+	+	+	+	+	+	+	+	+	+	+	+	+	+	+	+	+	+	+	+	+	+	+	+	
Z	+	31	+	32	+	33	+	34	+	35	+	36	+	+	+	+	+	+	+	+	+	+	+	+	
1	2	3	4	5	6	7	8	9	10	11	12	13	14	15	16	17	18	19	20	21	22	23	24	25	

Firm/Agency, Address

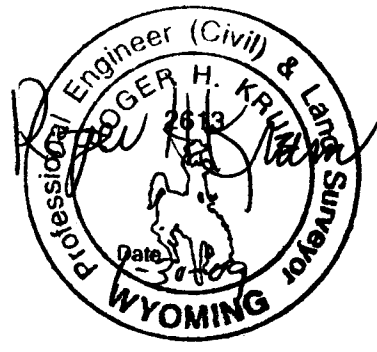
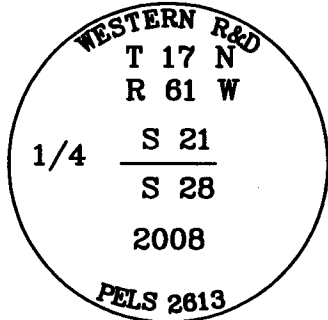
Western R&D, Ltd.  
 5809 Yellowstone Rd., Suite B  
 Cheyenne, Wyoming 82009

This corner record was prepared by me or under my direction and supervision.

SEAL & SIGNATURE

Telephone Number: (307) 632-5656

● Denotes Monument Set



Corner Name **NORTH 1/4 CORNER** Section **28**, T **17 N**, R **61 W**, 6th P.M.

County: **LARAMIE** Wyoming

Cross-Index No.: **R-11**

SBRPEPLS/PLSW: March 1994; PLSW January 1998

